

ionnic

BLADE SERIES



Blade

Blade – Micro



Blade – Mini

ionnic | 

Lighting | Safety | Electrical

For details of your nearest reseller free call : 1800 724 690 | www.ionnic.com

IONNIC Blade



- Latest lightbar technology featuring warning patterns, alley and take down lights and in-built traffic director.
- Includes switch panel providing control of all functions as well as real time operator feedback.
- 25 flash patterns including traffic direction.
- Low profile – 35mm.
- Polycarbonate lens for high durability.
- Lightbars environmentally sealed – IP67.
- Gore filter technology to prevent ingress.
- Dimming function via controller.
- Multi-voltage.
- 3-year warranty.

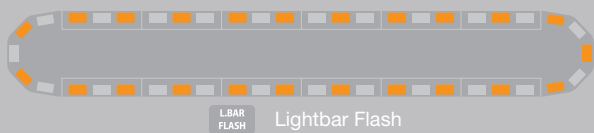


10V 30V IP67 3Yr-5

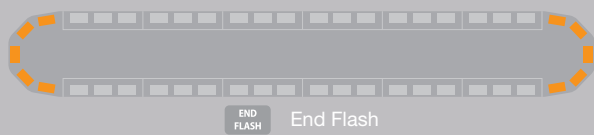
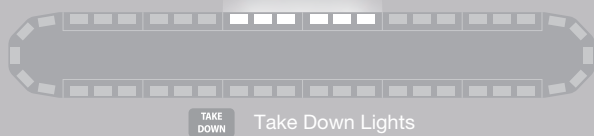
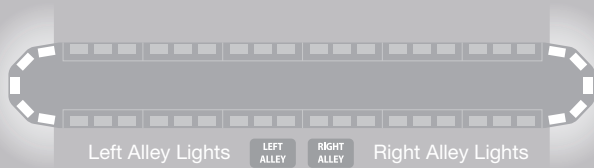
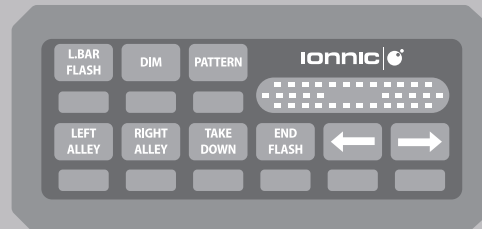
Operational Voltage : 10–30V
 Mount : 4 x M6 Bolts
 Lens : Polycarbonate
 Base : Aluminium
 Light Source : 1W LEDs
 Cable Length : 6.5m
 Approvals : SAE Class1, ECE R10, ECE R65 Class2 (End Flash only)
 Ingress Protection : Lightbars IP67
 Operating Temperature : -40°C to 60°C

Simple, Comprehensive Control

The purpose-built switch panel provides simple and total control of all lightbar functions.

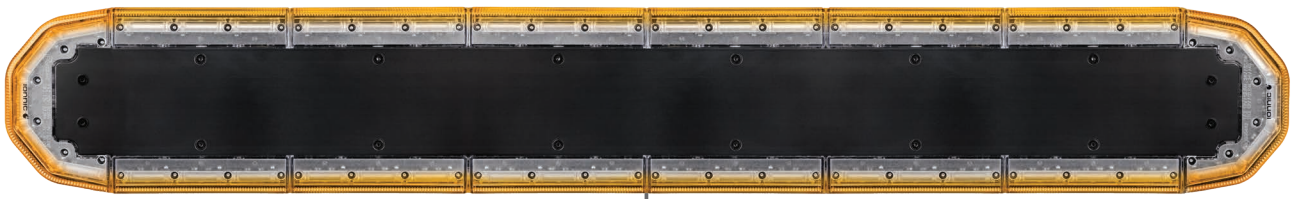


PATTERN Pressing the PATTERN button while in Right Arrow, Left Arrow or Lightbar Flash mode will cycle through the available patterns.



DIM Pressing the DIM button will reduce light output intensity.

Lightbars



Lightbar Flash



Left Alley Light

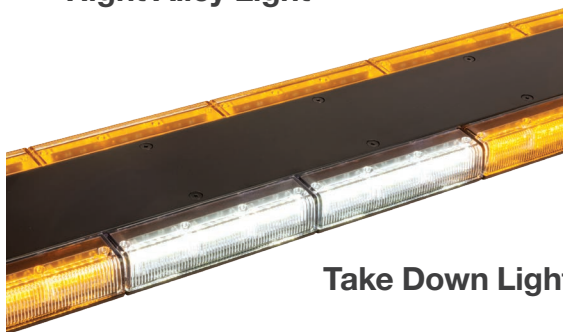


Right Alley Light

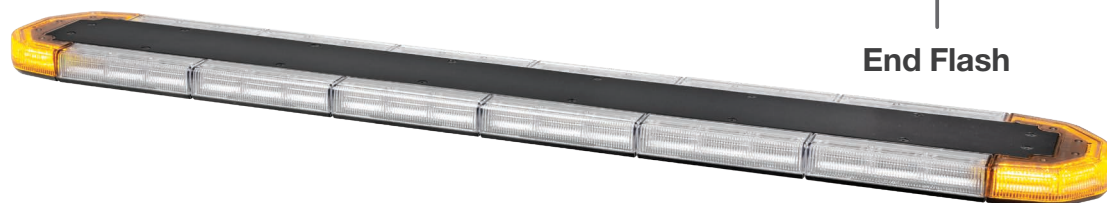


All in one Lightbar

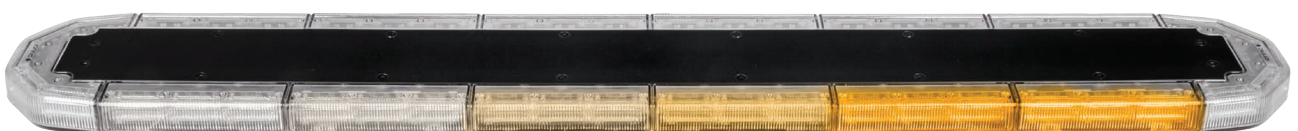
All this functionality, including Lightbar Flash patterns, Alley Lights, Take Down Lights, End Flash and traffic control through Left/Right Arrows, come standard with the Blade Series lightbars.



Take Down Lights



End Flash



Left Arrow, Right Arrow

Lightbars

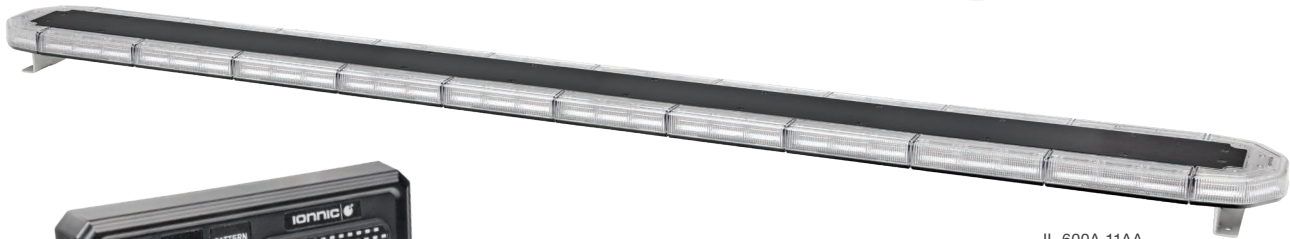
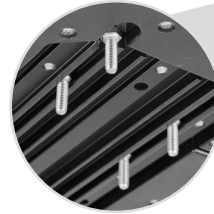


IL-200A-11AA

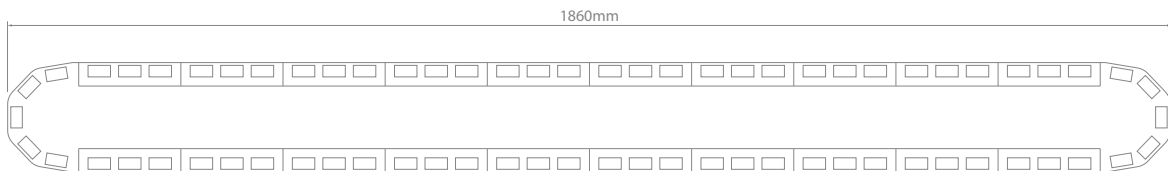
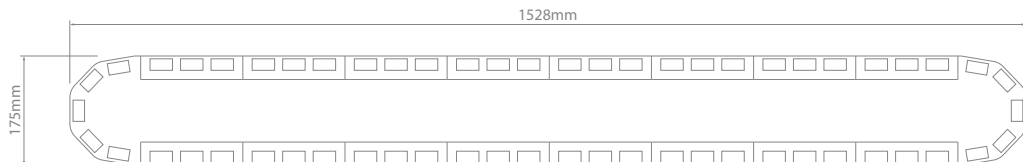
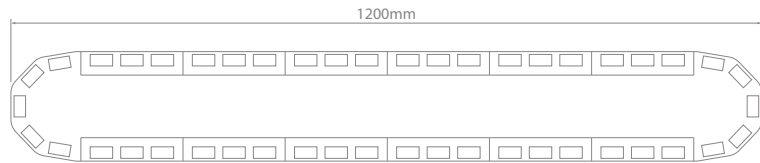
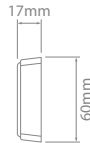
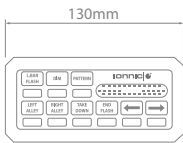
Supplied with brackets and mounting hardware



Mounting channel runs entire length of bar



IL-600A-11AA



35mm



IONNIC Blade

Length	Amber	Blue	Green	Magenta	Red	Red/Blue	Amber/Green	Max. Current Draw
1200mm	IL-200A-11AA	IL-233A-11AA	IL-244A-11AA	IL-266A-11AA	IL-255A-11AA	IL-277A-11AA	IL-288A-11AA	23A @ 12V
1528mm	IL-400A-11AA	IL-433A-11AA	IL-444A-11AA	IL-466A-11AA	IL-455A-11AA	IL-477A-11AA	IL-488A-11AA	29A @ 12V
1860mm	IL-600A-11AA	IL-633A-11AA	IL-644A-11AA	IL-666A-11AA	IL-655A-11AA	IL-677A-11AA	IL-688A-11AA	35A @ 12V

Supplied with brackets and mounting hardware including universal gutter mount.

Other colours available upon request, build times apply.

All lenses are clear.

Lightbars

- 15 flash patterns.
- High output 1 Watt LEDs.
- Low profile – 35mm.
- Polycarbonate lens for high durability.
- Environmentally sealed – IP67.
- Gore filter technology to prevent ingress.
- Dimming function.
- Multi-voltage.
- 3-year warranty.

Operational Voltage : 10–30V
 Mount : 4 x M6 Bolts
 Lens : Polycarbonate
 Base : Aluminium
 Light Source : 1W LEDs
 Cable Length : 3.1m
 Weight : 2.6kg
 Approvals : SAE Class1, ECE R10
 Ingress Protection : IP67
 Operating Temperature : -40°C to 60°C



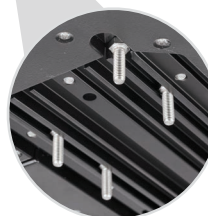
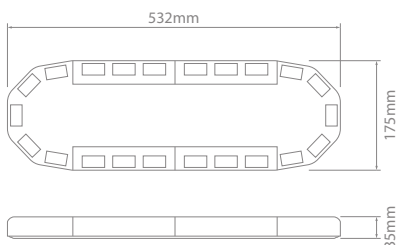
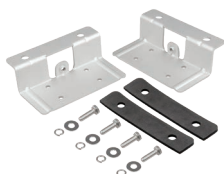
IL-1110-0

IONNIC Blade – Mini

10V
30V IP67 3Yrs



Supplied with brackets and mounting hardware



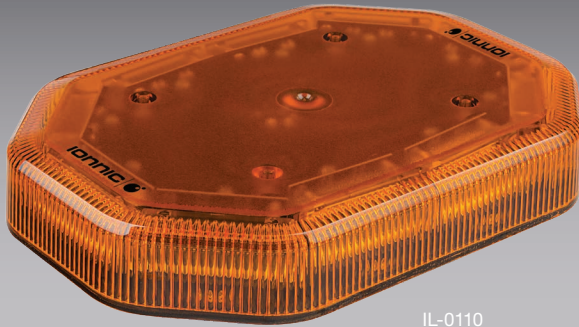
Mounting channel runs entire length of bar

IONNIC Blade – Mini

Length	Amber	Blue	Green	Magenta	Red	Red/Blue	Amber/Green	Max. Current Draw
532mm	IL-1110-0	IL-1330-0	IL-1440-0	IL-1660-0	IL-1550-0	IL-1770-0	IL-1880-0	11A @ 12V

Supplied with brackets and mounting hardware.
 Other colours available upon request, build times apply.
 All lenses are clear.

IONNIC Blade – Micro



IL-0110

- 12V
24V
- IP67
- 3Yrs

- Dual colour models available.
- Compact & low profile LED lightbar.
- High output 1 Watt LEDs.
- Up to 17 flash patterns.
- Magnetic version features cigar plug with integrated on/off (high or low output) & pattern select switches.
- Polycarbonate lens for high durability.
- Multi-voltage.
- Environmentally sealed – IP67.
- Gore filter technology to prevent ingress.
- 3-year warranty.

Voltage :	12–24V
Max. Current Draw :	4.5A @ 12V
Mount :	2 x M8 Bolts / Magnetic
Lens :	Polycarbonate
Base :	ABS
Light Source :	1W LEDs
Approvals :	SAE Class1, ECE R10/R65 Class 2
Ingress Protection :	IP67
Operating Temperature :	-40°C to 60°C



**Introducing
IONNIC
Blade – Micro**



Watch a quick video highlighting some of the many features of the IONNIC Blade Micro.

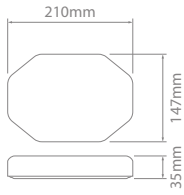


Powerful in Output, Tiny in Size

Compact enough to easily fit inside a glovebox.



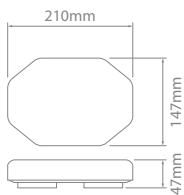
Lightbars



IONNIC Blade – Micro – 2 Bolt

	Amber	Blue	Green	Magenta	Red
Coloured Lens	IL-0110	—	—	—	—
Clear Lens	IL-011C	IL-033C	IL-044C	IL-066C	IL-055C

Supplied with mounting hardware.
600g. Cable length – 0.4m.
16 flash patterns.



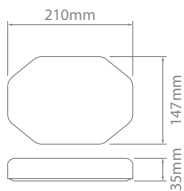
On/off (high or low output) & pattern select switches



IONNIC Blade – Micro – Magnetic

Coloured Lens	IL-0110-M
Clear Lens	IL-011C-M

900g. Cable length – 3.4m.
16 flash patterns.



Dual Colour

Dual Colour Blade Micro lightbars contain dual colour chip LEDs. Each colour is controlled independently, so each light pattern can function as either colour or both colours.



IONNIC Blade – Micro – 2 Bolt – Dual Colour NEW

Coloured Lens	Amber/Green	Red/Blue	Amber/Red
Clear Lens	IL-088C	IL-077C	IL-099C

Supplied with mounting hardware.
600g. Cable length – 0.4m.
17 flash patterns.



ionnic.com



Lighting | Safety | Electrical